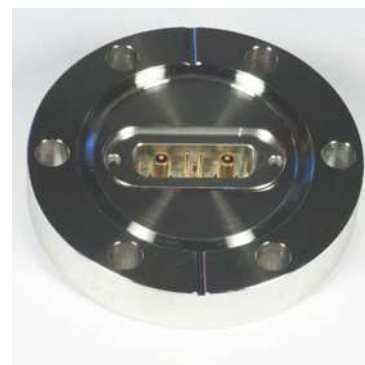


Combination Sub-D:

Coaxial Versions

Coaxial Mixed Sub.D feedthroughs are a good choice, if a floating shield coaxial connection is required, but the impedance is not an issue.

Up to 5 floating shield coaxial are offered in one feedthrough in the shell size of a standard 25-way Sub-D



General Specifications COMBINATION COAXIAL SUB-D

Compliance	DIN 41652, MIL-C-24308
Coaxial Pin	Floating shield
Standard Pin-ø	1.0 mm
Pin material	Gold plated NiFe
Seal	Glass Ceramic
Flange	Stainless Steel
Test Voltage	500V DC
Impedance Coax	not constant
Temp.	-200°C to 220°C
Leak rate	<5x10 ⁻¹⁰ mbar-l/s He

Sub-D Feedthroughs on CF Flanges, POWER and MIXED POWER

SIZE	NO. OF PINS	PART NUMBER
40CF	2C+3S	210-X15-2C3-C40
40CF	3C	210-X15-3C-C40
63CF	5C	210-X15-5C-C63
63CF	2x 2C+5S	210-X15-2C3-C63-2
63CF	2x 3C (6C)	210-X15-3C-C63-2
63CF	2x 5C (10C)	210-X15-5C-C63-2

C: Coaxial pin, S: Standard pin



Sub-D Feedthroughs on KF and ISO-K Flanges, POWER and MIXED POWER

SIZE	NO. OF PINS	PART NUMBER
40KF	2C+5S	210-X15-2C3-K40
40KF	3C	210-X15-3C-K40
63ISO-K	5C	210-X15-5C-ISO63
63ISO-K	2x24C+5S	210-X15-2C3-ISO63-2
63ISO-K	2x 3C (6C)	210-X15-3C-ISO63-2
63ISO-K	2x 5C (10C)	210-X15-5C-ISO63-2

C: Coaxial pin, S: Standard pin

Please note: The 5-pin power and coaxial feedthroughs are not symmetrical, BUT you can turn an air side connector by 180° to fit on the vacuum side. The housings are made to accept this. Please mind, that the pin numbering shown on the connectors is no longer valid in this case.

Combination Sub-D:

Coaxial connectors and pins

UHV connectors made out of PEEK as well as HV connectors are offered for combination Sub-D feedthroughs.

High power and coaxial types use the same connector sizes. Actually 3 types are offered:

- 2x Coax or Power pins + 5x 1mm pins
- 3x Coax or Power pins
- 5x Coax or Power pins

General Specifications Coaxial Pins

Centre Pin-	1 mm
Pin material	Gold plated
Max. Current	3A
Impedance	not constant
Temp.	-40°C to 120°C (HV housings) -200°C to 230°C UPEEK housings)
Recommended coaxial cables:	311-KAP50 311-KAP50-RAD



The air and vacuum side connectors accept power contacts as well as co-axial ones. Please order the desired pins separately and insert them into the connector.

The Standard 1mm pins are included with the connectors.



High Voltage pins can be used for in-vacuum connections either on its own or with Mixed male and female connectors. The in-vacuum voltage rating is 5KV DC. Test voltage 10KV in vacuum. Air side use max. 2.7KV DC

A feedthrough for these pins is NOT available.



COAXIAL SUB-D Vacuum side Connectors

TYPE	NO. OF PINS	PART NUMBER
HV*	2P/C +5	211-FX15-2X5-HV
HV	3P/C	211-FX15-3X-HV
HV	5P/C	211-FX25-5X-HV
UHV*	2P/C +5	211-FX15-2X5-PK
UHV	3P/C	211-FX15-3X-PK
UHV	5P/C	211-FX25-5X-PK

HV Male	2P/C +5	211-MX15-2X5-HV
HV Male	3P/C	211-MX15-3X-HV
HV Male	5P/C	211-MX25-5X-HV
UHV Male	2P/C +5	211-MX15-2X5-PK
UHV Male	3P/C	211-MX15-3X-PK
UHV Male	5P/C	211-MX25-5X-PK

*) Vacuum connectors include 5 off standard crimp pins
Please order the required power or coaxial pins separately

COAXIAL SUB-D Air side Connectors

TYPE	NO. OF PINS	PART NUMBER
AIR	2P/C +5S	211-FX15-2x5-AIR
AIR	2P/C	211-FX15-3X-AIR
AIR	5P/C	211-FX25-5X-AIR

AIR Male	2P/C +5	211-MX15-2X5-AIR
AIR Male	3P/C	211-FX15-3X-AIR
AIR Male	5P/C	211-FX25-5X-AIR

*) Vacuum connectors include 5 off crimp pins

COAXIAL SUB-D Pins (female and Male)

TYPE	NO. OF PINS	PART NUMBER
Coaxial Female	1 off	212-COAX-F
Coaxial Male	1 off	212-COAX-M

HIGH VOLTAGE PINS fitting to MIXED connectors (female and Male)

TYPE	NO. OF PINS	PART NUMBER
HV Female	1 off	212-HV-F
HVI Male	1 off	212-HV-M